

MARCH
2025



**NEW CUPRA
FORMENTOR**





SELECT YOUR ENGINE

| | | | CO2 WLTP | Fuel Economy WLTP | NOx | VRT Rate | Annual Motor Tax | RRP | ROTR |
|-----------|---------|--------------------------------|----------|-------------------|-----------|----------|------------------|---------|---------|
| FORMENTOR | KMPBNXA | Formentor 1.5 TSI 150hp | 140 g/km | 6.2 l/100km | 19.7mg/km | 20.00% | €210 | €39,885 | €40,885 |
| | KMPB5ZA | Formentor 1.5 eTSI 150hp DSG | 133 g/km | 5.9 l/100km | 17.9mg/km | 19.25% | €210 | €43,580 | €44,580 |
| | KMPBLZA | Formentor 2.0 TDI 150hp DSG | 135 g/km | 4.8 l/100km | 22.6mg/km | 19.25% | €210 | €44,820 | €45,820 |
| | KMPBOYA | Formentor eHYBRID 204hp DSG | 9 g/km | 0.4 l/100km | 7.5mg/km | 7.00% | €140 | €45,550 | €46,550 |
| VZ | KMPC1YA | Formentor VZ eHYBRID 272hp DSG | 10 g/km | 1.5 l/100km | 5.4mg/km | 7.00% | €140 | €53,600 | €54,600 |
| | KMPC3TA | Formentor VZ 2.0TSI 333hp DA | 198 g/km | 8.7 l/100km | 18.6mg/km | 41.00% | €790 | €73,535 | €74,535 |

Optional extras and Irish standard equipment may have an effect on the CO2, NOx and Fuel Economy figures. The CO2, NOx & Fuel Economy figures are the official figures obtained from tests under standardised EU test conditions. Information valid as of: 18.03.2025. Subject to change.

ROTR: Recommended on the road price is RRP including delivery charges of €1,000 as recommended by CUPRA Ireland. Please note every effort has been made to ensure the contents of this publication (including RRP, CO2, fuel consumption and technical information) were accurate and up-to-date at the time of publishing (18.03.2025). CUPRA Ireland reserves the right to change specification, prices and withdraw products from sale without notice. Any such alternations will be notified to CUPRA Retailers at the earliest opportunity. Please consult your local CUPRA retailer for the latest product information.

COLOUR

FIORD BLUE - 9K9K (Soft) **F** **vz**



MAGNETIC TECH MATT - 9R9R (Matt) **F** **vz**



CENTURY BRONZE- L3L3 (Matt) **vz**



ENCELADUS GREY- Q7Q7 (Matt) **vz**



GLACIAL WHITE- 2Y2Y (Metallic) **F** **vz**



MIDNIGHT BLACK- OE0E (Metallic) **F** **vz**



MAGNETIC TECH - S7S7 (Metallic) **F** **vz**



GRAPHENE GREY - R6R6 (Special) **F** **vz**



PAINT

Standard ■
Optional ■

WHEELS



SANDSTORM (Z9A)
19IN MACHINED SPORT BLACK / SILVER F VZ



SANDSTORM COPPER (Z9E)
19IN MACHINED SPORT BLACK / COPPER F VZ



ARTIC (Z9C)
19IN MACHINED SPORT BLACK / SILVER F VZ



ARTIC COPPER (Z9G)
19IN MACHINED SPORT BLACK / COPPER F VZ



SONORA
18IN MACHINED SPORT BLACK / SILVER F



HAILSTORM (Z9I)
19IN FORGED MACHINED SPORT BLACK / SILVER VZ



HAILSTORM COPPER (Z9M)
19IN FORGED MACHINED SPORT BLACK / COPPER VZ

INTERIORS



SHARP AMBIENT - AQ F



DYNAMIC AMBIENT* - CG & PS2 F VZ

INTERIORS



PROGRESSIVE AMBIENT* - KE & PR2 F VZ

STANDARD EQUIPMENT

FORMENTOR

| Model | RRP |
|------------------------------|---------|
| Formentor 1.5 TSI 150hp | €39,885 |
| Formentor 1.5 eTSI 150hp DSG | €43,580 |
| Formentor 2.0 TDI 150hp DSG | €44,820 |
| Formentor eHYBRID 204hp DSG | €45,550 |

EXTERIOR

- SONORA 18" Machined wheels in sport black & silver
- Heat-insulating and tinted rear windows
- Front and rear power windows
- Black roof rails
- Front Full LEDs
- Rear 3D LED lights w/dynamic turn signal & illuminated CUPRA Logo
- Dynamic headlight range control self-adjusting while driving
- Front LED fog lamps with cornering function
- Welcome light in exterior mirrors
- Exterior mirrors, power-folding, adjustable and heated with front passenger exterior mirror lowering function
- Separate daytime running light w/automatic headlight control & coming and leaving home feature
- CUPRA sport suspension

INTERIOR

- Multi-function sports steering wheel, heated w/Satellites (DSG only)
- Illuminated CUPRA lettering in door apertures
- Progressive Steering
- Textile sport seats
- CUPRA Drive Profile
- Manually adjustable height and lumbar support for front seats
- Mechanical rear seat release
- Two reading lights up in front and two in the rear
- Climatronic 3 zone air conditioning
- Aluminium Pedals (Automatic Only)
- Black roof cloth
- Heated front seats
- Auto Dimming Interior Mirror
- Front & Rear Centre Arm Rest

SAFETY

- XDS electronic differential lock with dynamic traction support
- i-Size and top tether child seat anchors in rear (2) and front passenger seats
- Front Assist
- Lane Assist
- Intelligent Speed Assist
- Traffic Sign Recognition
- Attention & Drowsiness Assist
- Driver & Passenger Airbags
- Side Airbag, Curtain & Interaction Airbag in Front
- Emergency Steering Support & Turn Assist
- 3-point safety belts for front and rear seats, with visual and acoustic reminder
- Adaptive Cruise Control
- High Beam Control
- Tyre Pressure Monitoring System
- Emergency Call

TECHNOLOGY

- Keyless Go
- 10.25" Digital cockpit
- 12.9" Infotainment System with Illuminated Sliders
- USB-C data sockets (2x Front | 2x Rear)
- 7 Speakers
- Voice Control
- Wireless Android Auto & Apple CarPlay
- DAB Radio
- CUPRA CONNECT
- Wireless Charger & Antenna Amplifier
- Start - stop system
- Rain & Light sensor
- Front & Rear Parking Sensors





STANDARD EQUIPMENT

FORMENTOR VZ

(in addition to Formentor)

| Model | RRP |
|--------------------------------|---------|
| Formentor VZ eHYBRID 272hp DSG | €53,600 |
| Formentor VZ 2.0 TSI 333hp DA | €73,535 |

EXTERIOR

- SANDSTORM 19" Machined alloy wheels in sport black and silver

INTERIOR

- Electric Drivers Seat
- Dinamica bucket seats
- Electric Tailgate & Virtual Pedal

SAFETY

- Alarm

TECHNOLOGY

- DCC - Dynamic chassis control
- Rear View Camera
- Keyless Advanced
- Smart Wraparound Interior Lighting

**STANDARD
EQUIPMENT - VZ**

Images are shown for representative purposes only and may contain optional extras.

OPTIONAL EQUIPMENT

| | | | FORMENTOR | FORMENTOR VZ | RRP From* |
|---|--|------------|-----------|---------------|---------------|
| ALLOY WHEELS | SANDSTORM - 19 " wheels Machined in Sport Black/Silver | Z9A | ○ | ● | €358 |
| | SANDSTORM COPPER - 19 "wheels Machined in Sport Black/Copper | Z9E | ○ | - | €649 |
| | | | - | ○ | €477 |
| | ARTIC - 19 "wheels Machined in Sport Black/Silver | Z9C | ○ | - | €983 |
| | | | - | ○ | €358 |
| | ARTIC COPPER- 19 "wheels Machined in Sport Black/Copper | Z9G | ○ | - | €1,790 |
| | | | - | ○ | €1,536 |
| HAILSTORM- 19 " wheels Forged in Sport Black/Silver | Z9I | - | ○ | €1,350 | |
| HAILSTORM COPPER - 19 " wheels Forged in Sport Black/Copper | Z9M | - | ○ | €1,641 | |

| | | | FORMENTOR | FORMENTOR VZ | RRP From* |
|----------|---|-----------------|-----------|--------------|----------------|
| INTERIOR | Sharp Ambient | AQ | ● | - | No Cost |
| | Dynamic Ambient [Dinamica Bucket Seats, Power Adjustment with Memory for Driver] *Requires Edge Pack | CG + PS2 | ○ | ● | €961 |
| | Progressive Ambient [Leather Bucket Seats, Power Adjustment with Memory for both front Seats] *Requires Edge Pack | KE + PR2 | ○ | - | €2,011 |
| | | | - | ○ | €1,154 |

| | | | FORMENTOR | FORMENTOR VZ | RRP From* |
|----------------|----------------|----------|-----------|--------------|----------------|
| PAINT FINISHES | Soft Paint | P | ● | ● | No Cost |
| | Metallic Paint | M | ○ | ○ | €960 |
| | Special Paint | C | ○ | ○ | €1,313 |
| | Matt Paint | T | ○ | ○ | €2,626 |

● Standard ○ Optional - Not Available

*RRP From is based on the lowest available VRT rate for that model range, adding options to vehicles with higher VRT rates will cause options to increase in cost. Adding optional extras to vehicles can have an impact on the CO₂ & Fuel Consumption of the vehicle. This may in turn change the VRT payable on the vehicle and thus increase the Total Price. Please discuss the addition of options and their impact with your CUPRA Master within our CUPRA Network. Information & pricing subject to change without notice.

OPTIONAL EQUIPMENT

FORMENTOR

FORMENTOR VZ

RRP From*

SPECIAL ITEMS

Edge Pack:

- Keyless Advanced
- Alarm
- Smart Interior Wraparound Lighting
- Rear View Camera
- Electric Tailgate & Virtual Pedal

WB1

○

●

€1,697

Immersive by Sennheiser [Requires Edge Pack & Emergency Spare Wheel]

- 11x Speaker & 1x Subwoofer Premium Sound System

PA1

○

-

€704

PA2

-

○

Pure Performance [Requires Edge Pack]

- Matrix LED Lights
- Dynamic Chassis Control (Std VZ)

PP1

○

-

€1,474

PP2

-

○

€1,134

Intelligent Drive [Only for Formentor Manual | Requires Edge Pack]

- Side & Exit Assist
- Pre-Crash Assist
- Top View Camera
- Navigation System [Requires YOS]

PF1

○

-

€1,363

Intelligent Drive [Only for DSG | Requires Edge Pack]

- Side & Exit Assist
- Pre-Crash Assist
- Lane Keeping System Plus, Semi Auto Control in Emergency
- Traffic Jam Assist
- Top View Camera
- Intelligent Park Assist
- Navigation System [Requires YOS]

PF2

○

○

€2,017

Skyline | Requires Edge Pack]

- Panoramic Sunroof

PTC

○

○

€1,287

Mirrors in Carbon Fibre Black

PFE

○

○

€633

Mirrors in Carbon Fibre Copper

PFI

○

○

€713

Towing Preparation

PRP

○

○

€143

Emergency Spare Wheel (18") [Not for PHEV]

PG6

○

○

€113

CUPRA CONNECT Plus [Required with Intelligent Drive Packs]

YOS

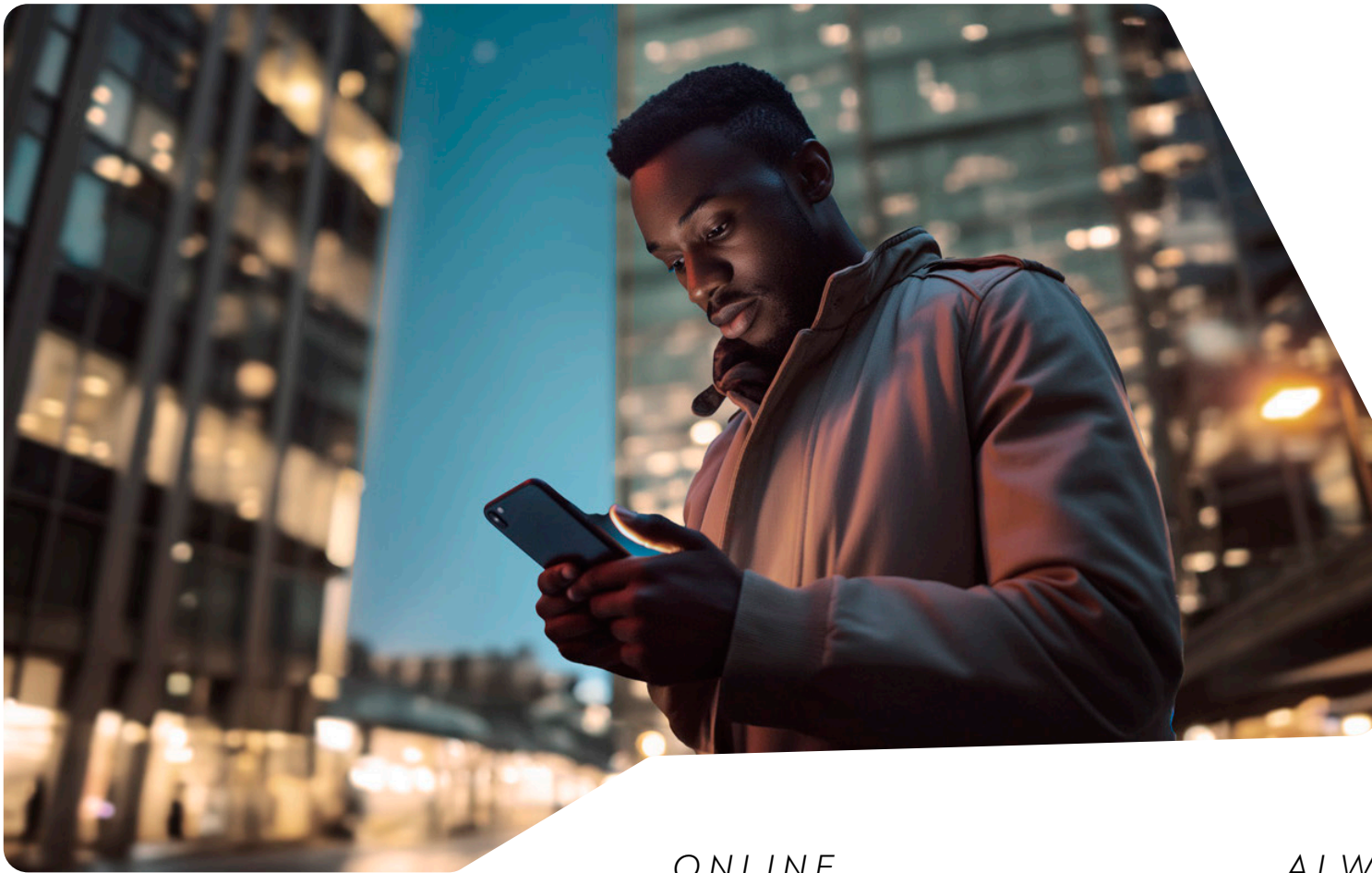
○

○

No Cost

● Standard ○ Optional - Not Available

*RRP From is based on the lowest available VRT rate for that model range, adding options to vehicles with higher VRT rates will cause options to increase in cost. Adding optional extras to vehicles can have an impact on the CO₂ & Fuel Consumption of the vehicle. This may in turn change the VRT payable on the vehicle and thus increase the Total Price. Please discuss the addition of options and their impact with your CUPRA Master within our CUPRA Network. Information & pricing subject to change without notice.



CUPRA CONNECT

ALWAYS WELL INFORMED WITH CUPRA CONNECT: RECEIVE REAL-TIME TRAFFIC UPDATES AND DIRECTIONS WHILE SEAMLESSLY CONNECTING TO YOUR SMARTPHONE TO UTILISE APPS AND LISTEN TO MUSIC SERVICES ON THE MOVE.

REMOTE ACCESS

Control, track and access the CUPRA Formentor remotely via your computer or mobile app. So, you can stay up to date on driving data and stats from anywhere.

ONLINE INFOTAINMENT

Access real-time traffic updates and directions and listen to Apple Music on the move.

ALWAYS BY YOUR SIDE

In the unlikely event of an accident, the Emergency Assistance function will put you automatically in contact with local emergency services.

FOR MORE INFORMATION ON CUPRA CONNECT PLEASE VISIT WWW.CUPRAOFFICIAL.IE

TECHNICAL SPECIFICATIONS (KMPBNX, KMPB5Z, KMPBLZ & KMPBOY)

ENGINE

| | 1.5 TSI 150hp (KMPBNXA) | 1.5 eTSI 150hp DSG (KMPB5ZA) | 2.0 TDI 150hp DSG (KMPBLZA) | e-Hybrid 204hp DSG (KMPBOYA) |
|-------------------------------|----------------------------|---------------------------------|--------------------------------|---------------------------------|
| Cylinder/Valve (Total) | 4/16 | 4/16 | 4/16 | 4/16 |
| Displacement (cc) | 1498 | 1498 | 1968 | 1498 |
| Cylinder bore and stroke (mm) | 74.5 / 85.9 | 74.5 / 85.9 | 81.0/95.5 | 74.5 / 85.9 |
| Compression ratio | 12 | 12 | 16 | 11.5 |
| Maximum power (kW (HP)/rpm) | 110(150)/5000-6000 | 110(150)/5000-6000 | 110(150)/3000-4200 | 150(204)/4000-6000 |
| Maximum torque (Nm/rpm) | 250/1500-3500 | 250/1500-3500 | 360/1600-2750 | 350/850-4000 |
| Fuel supply system | TSI Direct Injection | TSI Direct Injection | TSI Direct Injection | TSI Direct Injection |
| Aspiration | Turbocharged | Turbocharged | Turbocharged | Turbocharged |
| Fuel type | ROZ 95 | ROZ 95 | DIESEL | Petrol/Electric |

PERFORMANCE

| | | | | |
|-----------------------------|-----|-----|-----|-----|
| Maximum speed [km/h] | 205 | 205 | 205 | 210 |
| Acceleration 0-100 km/h (s) | 9.0 | 9.0 | 9.0 | 7.9 |

TRANSMISSION

| | | | | |
|-----------------------|-------------------|-------------------|-------------------|-------------------|
| Gearbox type | Manual | DSG (Automatic) | DSG (Automatic) | DSG (Automatic) |
| Transmission of drive | Front Wheel Drive | Front Wheel Drive | Front Wheel Drive | Front Wheel Drive |

ELECTRIC SYSTEM

| | | | | |
|------------------------------------|---|---|---|---------------|
| Battery Capacity [kWh] | - | - | - | 25.8 (20 net) |
| Battery Type | - | - | - | Li-ion |
| Electric Range [km] | - | - | - | 126 |
| Charging Time (AC 11kW) 0-100% SoC | - | - | - | 2 hrs 30 mins |
| Charging Time (DC 50kW) 10-80% SoC | - | - | - | 26 mins |

WEIGHTS & DIMENSIONS

| | | | | |
|---------------------------------------|----------------|----------------|----------------|----------------|
| Length / Width / Height [mm] | 4451/1839/1520 | 4451/1839/1520 | 4451/1839/1520 | 4451/1839/1537 |
| Wheelbase [mm] | 2679 | 2679 | 2679 | 2679 |
| Boot capacity [l] | 450 | 450 | 450 | 345 |
| Fuel tank capacity [l] | 50 | 50 | 50 | 40 |
| Max allowable weight [kg] | 1960 | 2000 | 2000 | 2190 |
| Max towing weight (unbraked) [kg] | 710 | 740 | 740 | 750 |
| Max towing weight (braked - 12%) [kg] | 1500 | 1500 | 1500 | 1700 |

TECHNICAL SPECIFICATIONS - VZ (KMPC1Y & KMPC3T)

ENGINE

| | VZ e-Hybrid 272hp DSG (KMPC1YA) | VZ 2.0 TSI 333hp DA (KMPC3TA) |
|-------------------------------|---------------------------------|-------------------------------|
| Cylinder/Valve (Total) | 4/16 | 4/16 |
| Displacement (cc) | 1498 | 1984 |
| Cylinder bore and stroke (mm) | 74.5 / 85.9 | 82.5 |
| Compression ratio | 11.5 | 92.8 |
| Maximum power (kW (HP)/rpm) | 200(272)/4750-6500 | 245(333)/5600-6500 |
| Maximum torque (Nm/rpm) | 400/850-4750 | 420/2100-5500 |
| Fuel supply system | TSI Direct Injection | TSI Direct Injection |
| Aspiration | Turbocharged | Turbocharged |
| Fuel type | Petrol/Electric | ROZ95 |

PERFORMANCE

| | | |
|-----------------------------|-----|-----|
| Maximum speed [km/h] | 220 | 250 |
| Acceleration 0-100 km/h (s) | 7.2 | 4.8 |

TRANSMISSION

| | | |
|-----------------------|-------------------|-----------------|
| Gearbox type | DSG (Automatic) | DSG (Automatic) |
| Transmission of drive | Front Wheel Drive | 4 Wheel Drive |

ELECTRIC SYSTEM

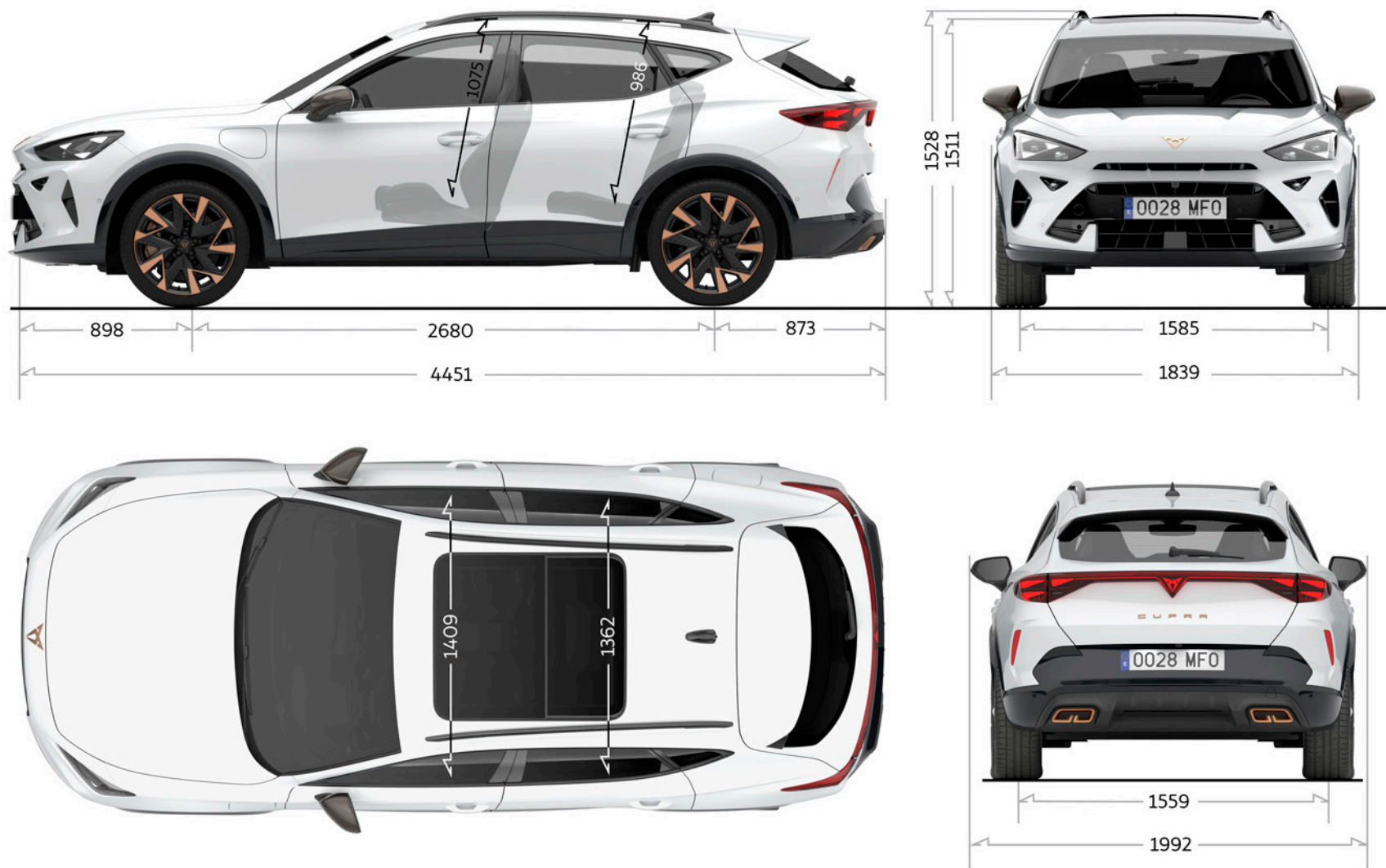
| | | |
|------------------------------------|---------------|---|
| Battery Capacity [kWh] | 25.8 (20 net) | - |
| Battery Type | Li-ion | - |
| Electric Range [km] | 118 | - |
| Charging Time (AC 11kW) 0-100% SoC | 2 hrs 30 mins | - |
| Charging Time (DC 50kW) 10-80% SoC | 26 mins | - |

WEIGHTS & DIMENSIONS

| | | |
|---------------------------------------|----------------|----------------|
| Length / Width / Height [mm] | 4451/1839/1537 | 4451/1839/1511 |
| Wheelbase [mm] | 2679 | 2679 |
| Boot capacity [l] | 345 | 420 |
| Fuel tank capacity [l] | 40 | 50 |
| Max allowable weight [kg] | 2200 | 2160 |
| Max towing weight (unbraked) [kg] | 750 | 750 |
| Max towing weight (braked - 12%) [kg] | 1700 | 1700 |

TECHNICAL SPECIFICATIONS

Dimensional Drawing





CUPRA is committed to a policy of continuous product development and reserves the right to make changes to specifications, colours and prices without notice. The information in this product guide can therefore be given as guidance only. While CUPRA makes every effort to ensure that specifications are accurate at the time of publication, you should always check with your authorised CUPRA Partner for the latest information. Due to limitations of the printing process the colours reproduced in this guide may vary slightly from the actual paint colours and material.